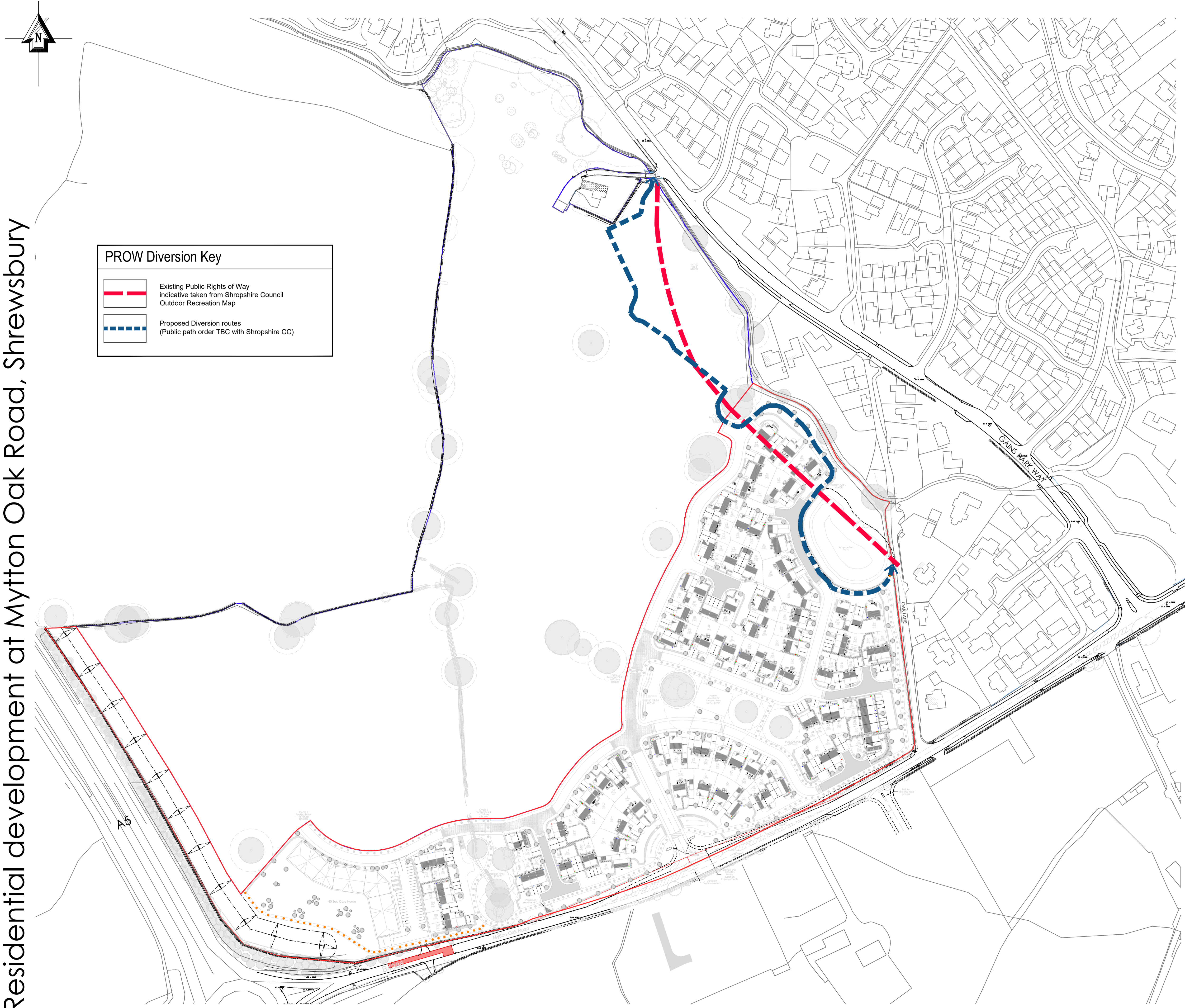


Residential development at Mytton Oak Road, Shrewsbury



**PROW Diversion Key**

|  |   |
|--|---|
|  | Existing Public Rights of Way<br>indicative taken from Shropshire Council<br>Outdoor Recreation Map |
|  | Proposed Diversion routes<br>(Public path order TBC with Shropshire CC)                             |

|  |           |  |            |          |             |
|--|-----------|--|------------|----------|-------------|
| A  |           | Updated in accordance with planning layout 177-906-1004 Rev P. Proposed diversion remains the same. Red line amended to include note band. Speed gateway location added. |            | 04/07/24 | GVP         |
| REVISION   |           | DATE   | Rev.       | By       |             |
|  |           | <b>SHROPSHIRE HOMES LTD</b><br>THE OLD WORKHOUSE<br>CROSS HOUSES<br>SHREWSBURY<br>SHROPSHIRE<br>SY5 6JH<br>TELEPHONE: (01743) 761789                                     |            |          |             |
| JOB OAK FARM, MYTTON<br>OAK ROAD,<br>SHREWSBURY. |           | TITLE<br>PROW Diversion Plan   |            |          |             |
| DWG No.  | 177-P-110 | DATE   | MARCH 2024 | SCALE    | 1:1250 @ A1 |
| VERSION  | DRAWN     | BPC  |            | REVISION | A           |